



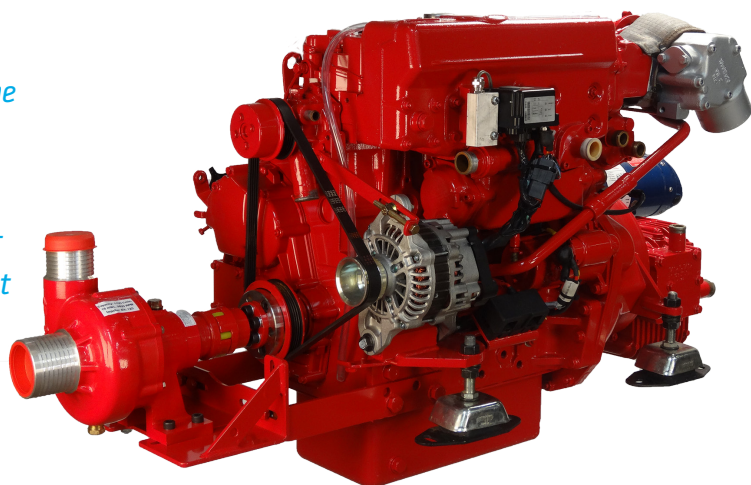
powering **marine** safety

# D2-60

## BUKH SOLAS MARINE DIESEL ENGINE 60 HP (44 KW)

*D2-60 is an in-line 4-cylinder, 2.2-liter, charge air cooled diesel engine using a camdriven, in-line injection pump, and freshwater cooling. With low cruising rpm, the engine runs quietly with minimal vibrations.*

*Emission compliance US EPA Tier 3 / EU RCD II - This design allowed the engines to pass and obtain the US Coast Guard approval for use as lifeboat engines.*



### TECHNICAL DESCRIPTION:

#### ENGINE BLOCK AND HEAD

- Cylinder block and cylinder head manufactured from high grade cast iron. Crankcase features a rigid tunnel block design
- Chrome molybdenum forged crankshaft, statically and dynamically balanced with integral counterweights. pistons are cast from high silicon aluminum, are heat treated and fitted with two cast iron, chromium faced compression rings and a single oil ring
- Replaceable, hardened valve seats
- Elastic coupling on flywheel

#### ENGINE MOUNTING

- Flexible engine mounting

#### LUBRICATION SYSTEM

- Spin-on fullflow oil filter
- Separate oil scavenger pipe
- Closed circuit crankcase ventilation
- One top and one side oil filling position

#### FUEL SYSTEM

- Flange mounted, cam driven in-line injection
- Feed pump with hand primer
- Spin-on type fine fuel filter
- Auxiliary stop button on engine

#### COOLING SYSTEM

- Keel cooling (Standard)
- Coolant water heater 42 V - 350 W (Option)

#### ELECTRICAL SYSTEM

- 12V corrosion-protected electrical system
- 115A marine alternator
- 24 V alternator as option
- Charging regulator with electronic sensor for voltage drop compensation
- Glow plugs for excellent cold starting
- Electric starter motor(2.0 kW output)
- Electric stop

#### INSTRUMENTS

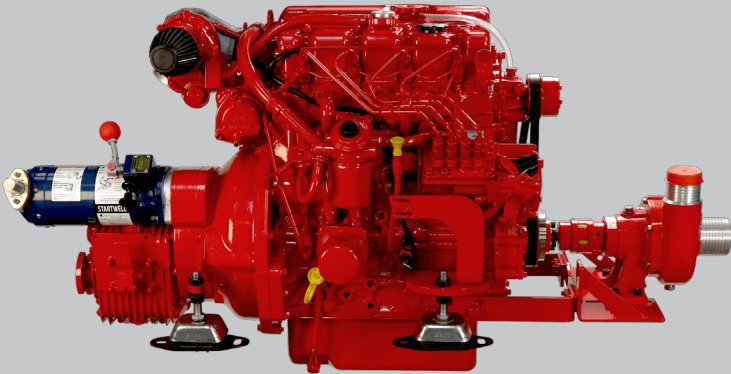
- Start/stop panel
- Tachometer with alarms and engine hour counter

#### OPTIONAL EQUIPMENT

- Front mounted spraypump kit
- Cooling water heater (42 V - 350W)
- Certified cold start to minus 30 degrees
- Springstarter in combination with electric starter

#### REVERSE GEAR

- MS25L - Mechanical drop center with streight output shaft - Ratio 1:2,74



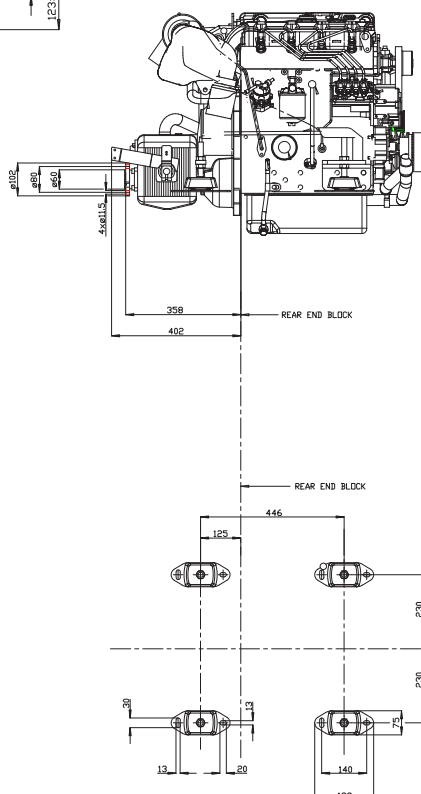
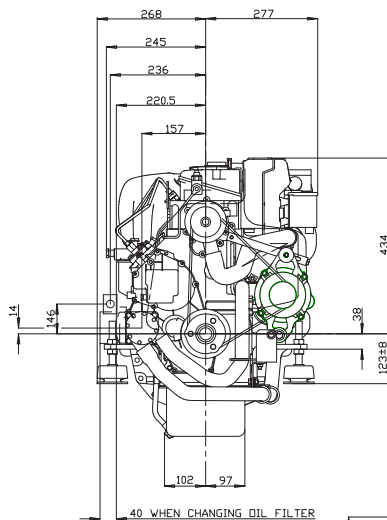
## D2-60 Specifications

Engine type	D2
Engine duty rating	C12 - Low Speed Craft Commercial_3
Crankshaft power [hp(kW)]	60 (44)
Rpm@full load	3000
Cylinders	In-line 4
Displacement [L]	2,2
Bore [mm]	84
Stroke [mm]	100
Compression ratio	23.3:1
Emission compliance	BSO, EU RCD stage II, US EPA Tier 3
Alternator [V -A]	12V - 115A
Electronic engine diagnostic	NO
Max. Fuel consumption [L/h]	21
Dry weight with gear [kg]	258
Propulsion system	Shaft Drive

As BUKH is always endeavouring to improve the engines, specifications mentioned are subject to alterations without previous notice.

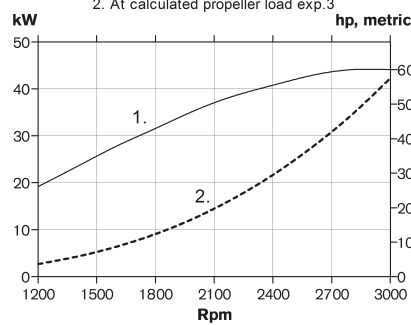
## D2-60 Dimensions

*Not for installation*



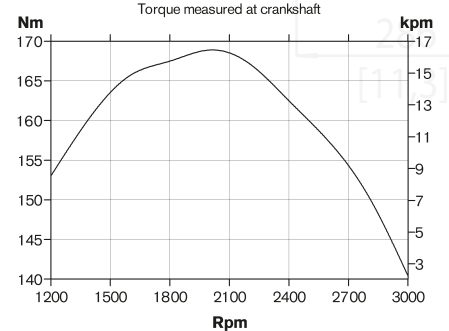
## Power

1. Crankshaft
2. At calculated propeller load exp.3



## Torque

Torque measured at crankshaft



### Fuel Consumption

At calculated propeller load exp. 3

